

PRODUCT RECALL - Evol Frozen Burritos and Meals 101724

Date of Issue – 2024-10-17

Recall #

UNFI was notified by the manufacturer of a food safety event. Records indicate your location may have received impacted product. Refer to this notice and the supplier letter to identify and remove impacted product from the marketplace. Enter your findings into Recall Infolink.

Impacted UNFI Business Units: Natural & Conventional
Event Classification: Voluntary Recall

Supplier Name: CONAGRA BRANDS INC. (FRZ)

Supplier Contact: Reverse Logistics, reverselogistics@conagrafoods.com, 800-375-0338

Product Issue: BrucePac, one of Conagra Brands' suppliers, produces ready-to-eat (RTE) meat and poultry. On October 9, 2024, BrucePac, in cooperation with the United States Department of Agriculture (USDA), initiated a product recall on select ready-to-eat (RTE) meat and poultry products that may be adulterated with *Listeria monocytogenes*.

Retail Disposition : **Destruction**

Brand Name & Description	Pack Size	Case UPC	Unit UPC	Impacted Best by Date(s)/ Lot Codes (MUST provide Best By Date)
EVOL LNF SS CKN TRYKI	8/9Z	10-8-91627-00927-2	00-8-91627-00900-8	BBD 6/19/2025 LOT 4238417120
EVOL CKN ENCHLDA	8/9Z	10-8-91627-00929-6	00-8-91627-00902-2	BBD 6/24/2025 LOT 4238417620
EVOL BWL CHPLTE CKN MAC N CHS	8/8Z	10-8-91627-00924-1	00-8-91627-00294-8	BBD 9/3/2025 LOT 4238424720
EVOL BURITO CKN CHEDD	12/6Z	10-8-91627-00250-1	00-8-91627-00250-4	BBD 1/28/2026 LOT 4932421920
EVOL BURITO CKN CHEDD	12/6Z	10-8-91627-00250-1	00-8-91627-00250-4	BBD 1/29/2026 LOT 4932422020
EVOL BURITO CILANTRO LIME CKN	12/6Z	10-8-91627-00300-3	00-8-91627-00300-6	BBD 1/30/2026 LOT 4932422120
EVOL BURITO CILANTRO LIME CKN	12/6Z	10-8-91627-00300-3	00-8-91627-00300-6	BBD 2/12/2026 LOT 4932423420
EVOL BURITO CKN CHEDD	12/6Z	10-8-91627-00250-1	00-8-91627-00250-4	BBD 2/19/2026 LOT 4932424120
EVOL BURITO CILANTRO LIME CKN	12/6Z	10-8-91627-00300-3	00-8-91627-00300-6	BBD 3/4/2026 LOT 4932425420
EVOL BURITO CILANTRO LIME CKN	12/6Z	10-8-91627-00300-3	00-8-91627-00300-6	BBD 3/13/2026 LOT 4932426320

**Cease distribution on the above product. Isolate the product in a secure location
Follow the below instructions to ensure proper disposition of the product.**

1. Remove items listed above from sales floor, displays and back stock.
2. Count the units of impacted product (**only date(s)/lot code(s) listed above**) and record in Recall Infolink.
3. Impacted product must not re-enter commerce or be made available for consumption by any means.

4. **For Credit:** Enter your impacted product count (**only date(s)/lot code(s) listed above**) through Recall Infolink
5. Complete disposition ASAP
6. Inspect inbound product for the next 48 hours to ensure no impacted product is received



Conagra Brands
222 W. Merchandise Mart Plaza
Suite 1300
Chicago, IL 60654

October 17, 2024

To Our Valued Customers,

BrucePac, one of Conagra Brands' suppliers, produces ready-to-eat (RTE) meat and poultry. On October 9, 2024, BrucePac, in cooperation with the United States Department of Agriculture (USDA), initiated a product recall on select ready-to-eat (RTE) meat and poultry products that may be adulterated with *Listeria monocytogenes*. This resulted in a recall by Conagra Brands of 8,046 cases of Udi's Multi-serve Meals that we initiated with impacted customers on October 11, 2024.

On October 15, 2024, USDA announced an expansion of the BrucePac recall. BrucePac subsequently notified Conagra that some of the product from the expanded recall was supplied to Conagra Brands. Upon investigating, Conagra has identified 21,502 cases of select EVOL Single-serve Meals and Burritos have been shipped to customers that were made with BrucePac product from its expanded recall. As such, Conagra Brands is conducting a voluntary recall of these cases of EVOL Single-serve Meals and Burritos as the product does not meet Conagra's high-quality standards due to the potential presence of *Listeria monocytogenes*. Importantly, for those customers that received our prior communication as a result of the initial BrucePac recall, there are no additional impacts to the 8,046 cases of Udi's Multi-serve Meals previously recalled.

Conagra Brands does not anticipate that the USDA will issue a separate press release regarding Conagra's recall of these products, but instead will add these products to the existing press release for BrucePac's recall that includes a list of impacted products.

The situation is limited to the impacted items and does not impact any other Conagra Brands products. There have been no reports of illness or injury due to the consumption of the products to date.

Consumers with questions about the impacted product should contact Conagra Brands consumer affairs for Udi's at (800) 254-3768 and for EVOL at (877) 852-7424 from 9 a.m. to 5 p.m. CST Monday through Friday or at Consumer.Care@conagra.com.

The items listed below are the only EVOL SKUs impacted by this action. Please see impacted product photos for specific instructions on the destruction of case and product at shelf.

Impacted item information:

Item Description	Each UPC	Case UPC	Batch/Lot Code	BEST IF USED BY DATE	Insert Customer Specific Quantities
EVOL BURITO CKN CHEDD 12/6Z	00-8-91627- 00250-4	10-8-91627- 00250-1	4932421920 4932422020 4932424120	JAN 28 2026 JAN 29 2026 FEB 19 2026	SEE ATTACHED FILE FOR DETAILS
EVOL BURITO CILANTRO LIME CKN 12/6Z	00-8-91627- 00300-6	10-8-91627- 00300-3	4932422120 4932423420 4932425420 4932426320	JAN 30 2026 FEB 12 2026 MAR 04 2026 MAR 13 2026	
EVOL BWL CHPLTE CKN MAC N CHS 8/8Z	00-8-91627- 00294-8	10-8-91627- 00924-1	4238424720	SEPT 03 2025	
EVOL LNF SS CKN TRYKI 8/9Z	00-8-91627- 00900-8	10-8-91627- 00927-2	4238417120	JUN 19 2025	
EVOL CKN ENCHLDA 8/9Z	00-8-91627- 00902-2	10-8-91627- 00929-6	4238417620	JUN 24 2025	

The impacted products were shipped to you on the dates listed below. Store-level product and warehouse-level product with the impacted lot code(s) should be destroyed per your usual reclamation or unsaleable process. Attached is an affidavit of destruction. Please complete and either email or fax the form to the provided information on the affidavit to receive credit.

Please retain this notification letter along with the date/time received and maintain a record of the number of units/cases of product found at the store or warehouse. If you have further distributed this product, please notify your customers, provide them with a copy of this notice and ask for their compliance.

Customer	Item Description	Item Code	Case UPC	Unit UPC	PO#	Case Quantity	Delivery Date	Best By Date
SEE ATTACHED FILE FOR DETAILS								

We apologize for any business disruption this may cause and thank you for your support. If you have any questions, please reach out to your Conagra Brands sales representative.

Sincerely,



Derek De La Mater
EVP and Chief Customer Officer



Version	09	Doc	ENQA 4.6.4.012
Review by Date	08.2025	Document Level	Tier 2C
Page 1 of 1			

To ensure compliance with the Code of Federal Regulations (CFR), 21 CFR 7.42b.3 Recall Strategy Effectiveness Checks and 21 CFR 7.49 c.1.(v) Recall Communications, you are REQUIRED to report any quantities of recalled product within your inventory AND affirm the appropriate actions have been taken to remove said product from commerce.

Affidavit of Destruction - External			
Complete the recipient details regarding this destruction event.			
PO #:			
Consignee / Customer Name:			
City:			
State:			
Phone #:			
Report the amount of product identified, removed and destroyed from your inventory.			
<p>This is to certify that the above listed customer (consignee) /carrier destroyed the product(s) and quantities listed below as authorized by Conagra Brands. The list below includes all the lot codes included in the recall; however, you may not have received all lots in the list and you can report that value as zero. If you have any additional questions, email DonateAndDestroy@Conagrafoods.com.</p>			
Product Name	UPC Code	Date Code/Batch/Lot #	# of Cases or Eaches
(pre-fill with the affected product and lots)			
Complete details of who was responsible for / witnessed destruction, how it was destroyed and who completed the form.			
<p style="text-align: center;">Product Destruction Information</p> <p>Based on the OS&D Event reported, this is your authorization of disposition for the above products. Product destruction can include: placing in secured dumpster / container, incinerating, or otherwise rendered inedible. No other products are to be destroyed without proper authorization from Conagra Brands. For product recalls or food safety events, a witness to destruction is required.</p>			
Name:			
Title:			
Date Destroyed:			
Destruction Completed By (Consignee / Customer or Third Party name):			
Describe Method of Destruction:			
Form Completed By			
Name:			
Title:			
Date:			
<p style="text-align: center;">After the destruction has been completed, send the completed form via email or fax within 24 hours to:</p>			
DonateAndDestroy@Conagrafoods.com		OR	Fax #: 402-517-4269



EVOL Voluntary Market Recall

October 17, 2024

EVOL Burrito Chicken Cheddar 12/6z Impacted Product Photos

EVOL BURRITO CKN CHEDD 12/6Z
Unit UPC: 00-8-91627-00250-4

MFG/Lot Code	BEST IF USED BY
4932421920	JAN 28 2026
4932422020	JAN 29 2026
4932424120	FEB 19 2026



***Please note:** The lot code may contain additional digits which are internal Conagra ID numbers. Continue to use the lot code provided to identify impacted product.

EVOL Burrito Chicken Cheddar 12/6z Impacted Case Photos



EVOL BURITO CKN CHEDD 12/6Z
Case UPC: 10-8-91627-00250-1

MFG/Lot Code	BEST IF USED BY
4932421920	JAN 28 2026
4932422020	JAN 29 2026
4932424120	FEB 19 2026

***'BEST IF USED BY' date in photo is for example purpose only. Impacted 'BEST IF USED BY' dates are listed in the table.**

***Please note:** The lot code may contain additional digits which are internal Conagra ID numbers. Continue to use the lot code provided to identify impacted product.

EVOL Burrito Cilantro Lime Chicken 12/6z Impacted Product Photos



EVOL BURRITO CILANTRO LIME CKN 12/6Z
Unit UPC: 00-8-91627-00300-6

MFG/Lot Code	BEST IF USED BY
4932422120	JAN 30 2026
4932423420	FEB 12 2026
4932425420	MAR 04 2026
4932426320	MAR 13 2026



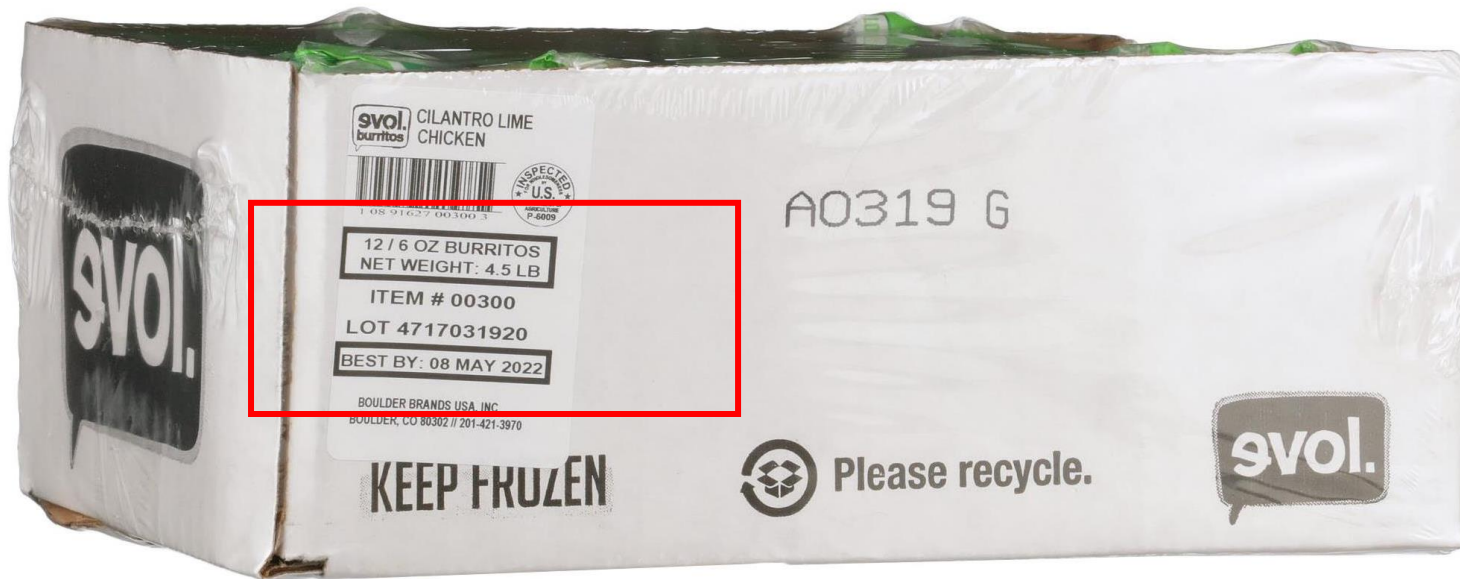
***Please note:** The lot code may contain additional digits which are internal Conagra ID numbers. Continue to use the lot code provided to identify impacted product.

EVOL Burrito Cilantro Lime Chicken 12/6z Impacted Case Photos



EVOL BURITO CILANTRO LIME CKN 12/6Z Case UPC: 10-8-91627-00300-3

MFG/Lot Code	BEST IF USED BY
4932422120	JAN 30 2026
4932423420	FEB 12 2026
4932425420	MAR 04 2026
4932426320	MAR 13 2026



'BEST IF USED BY' date in photo is for example purpose only. Impacted 'BEST IF USED BY' dates are listed in the table.

***Please note:** The lot code may contain additional digits which are internal Conagra ID numbers. Continue to use the lot code provided to identify impacted product.

EVOL Bowl Chipotle Chicken Mac & Cheese 8/8z Impacted Product Photos

EVOL BWL CHPLTE CKN MAC N CHS 8/8Z
Unit UPC: 00-8-91627-00294-8

MFG/Lot Code	BEST IF USED BY
4238424720	SEPT 03 2025

The impacted 'BEST IF USED BY' date is listed in the table above.



***Please note:** The lot code may contain additional digits which are internal Conagra ID numbers. Continue to use the lot code provided to identify impacted product.

EVOL Bowl Chipotle Chicken Mac & Cheese 8/8z Impacted Case Photos



EVOL BWL CHPLTE CKN MAC N CHS 8/8Z
Case UPC: 10-8-91627-00924-1

MFG/Lot Code	BEST IF USED BY
4238424720	SEPT 03 2025

The impacted 'BEST IF USED BY' date is listed in the table above.

***Please note:** The lot code may contain additional digits which are internal Conagra ID numbers. Continue to use the lot code provided to identify impacted product.

EVOL Lean and Fit Single-serve Chicken Teriyaki 8/9z Impacted Product Photos



EVOL LNF SS CKN TRYKI 8/9Z
 Unit UPC: 00-8-91627-00900-8

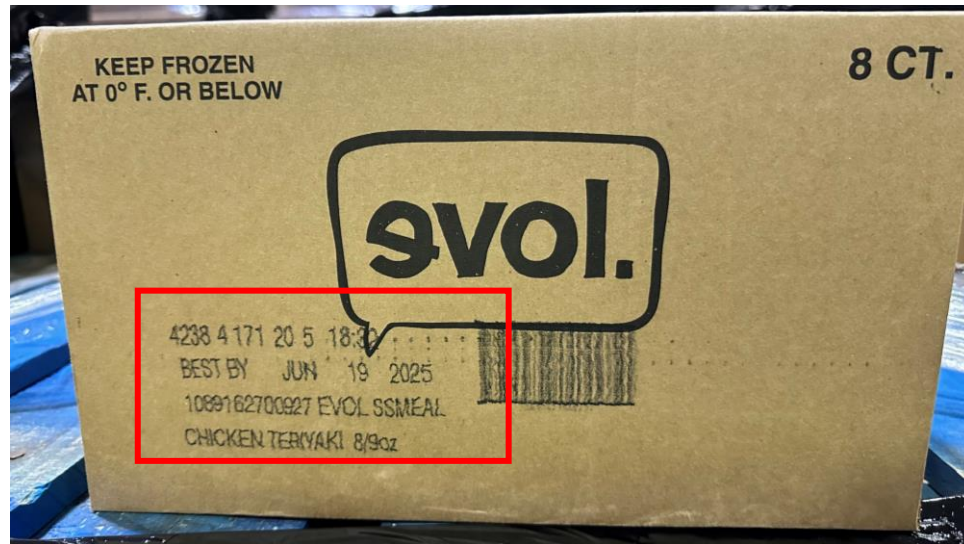
MFG/Lot Code	BEST IF USED BY
4238417120	JUN 19 2025

The impacted 'BEST IF USED BY' date is listed in the table above.



***Please note:** The lot code may contain additional digits which are internal Conagra ID numbers. Continue to use the lot code provided to identify impacted product.

EVOL Lean and Fit Single-serve Chicken Teriyaki 8/9z Impacted Case Photos



EVOL LNF SS CKN TRYKI 8/9Z
Case UPC: 10-8-91627-00927-2

MFG/Lot Code	BEST IF USED BY
4238417120	JUN 19 2025

The impacted 'BEST IF USED BY' date is listed in the table above.

***Please note:** The lot code may contain additional digits which are internal Conagra ID numbers. Continue to use the lot code provided to identify impacted product.

EVOL Chicken Enchilada 8/9z Impacted Product Photos

EVOL CKN ENCHLDA 8/9Z
 Unit UPC: 00-8-91627-00902-2

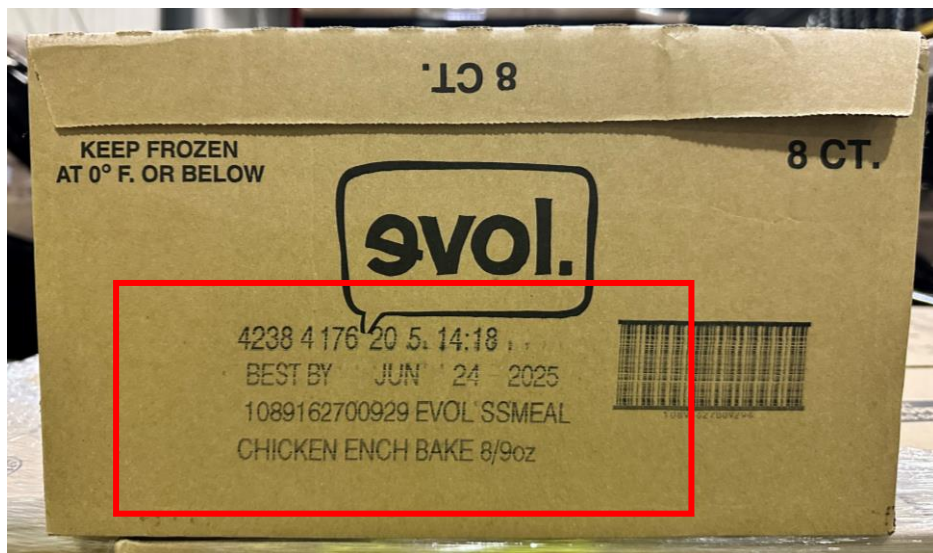
MFG/Lot Code	BEST IF USED BY
4238417620	JUN 24 2025

The impacted 'BEST IF USED BY' date is listed in the table above.



*Please note: The lot code may contain additional digits which are internal Conagra ID numbers. Continue to use the lot code provided to identify impacted product.

EVOL Chicken Enchilada 8/9z Impacted Case Photos



EVOL CKN ENCHLDA 8/9Z
Case UPC: 10-8-91627-00929-6

MFG/Lot Code	BEST IF USED BY
4238417620	JUN 24 2025

The impacted 'BEST IF USED BY' date is listed in the table above.

***Please note:** The lot code may contain additional digits which are internal Conagra ID numbers. Continue to use the lot code provided to identify impacted product.



Previously Communicated Udi's Multi-serve
Voluntary Market Recall Items:
10/11/2024 Sales Flash

Udi's Chicken Alfredo Meal 6/18oz Impacted Product Photos

UDI MEAL CKN ALFRD 6/18Z
Unit UPC: 00-6-98997-80766-7

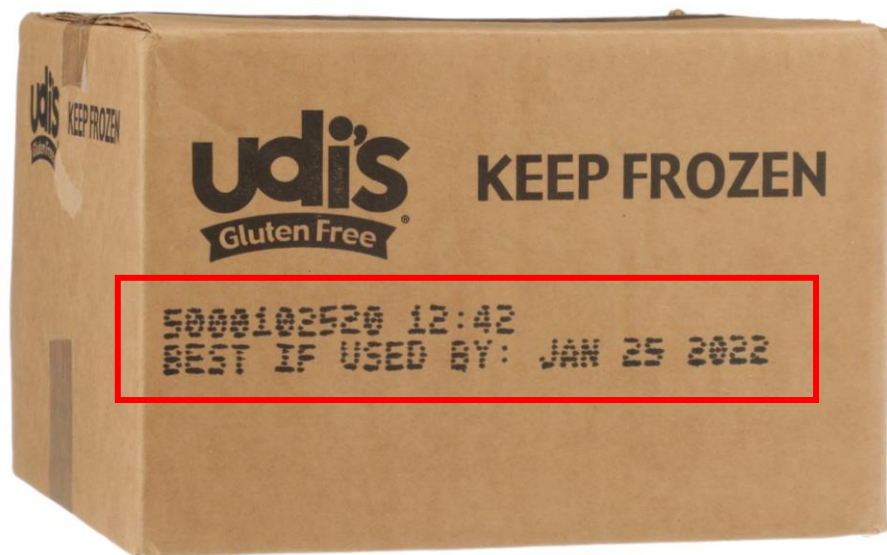
MFG/Lot Code	BEST IF USED BY
5000421420	AUG 01 2025



***Please note:** The lot code may contain additional digits which are internal Conagra ID numbers. Continue to use the lot code provided to identify impacted product.

Udi's Chicken Alfredo Meal 6/18oz Impacted Case Photos

UDI MEAL CKN ALFRD 6/18Z
Case UPC: 10-6-98997-80766-4



MFG/Lot Code	BEST IF USED BY
5000421420	AUG 01 2025

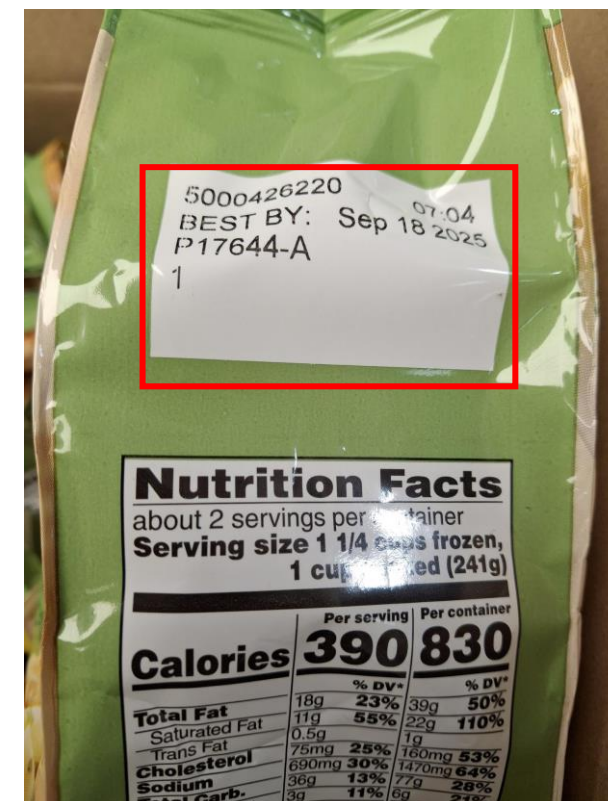
***'BEST IF USED BY' date in photo is for example purpose only. Impacted 'BEST IF USED BY' dates are listed in the table.**

***Please note:** The lot code may contain additional digits which are internal Conagra ID numbers. Continue to use the lot code provided to identify impacted product.

Udi's Chicken Alfredo Meal 4/18oz Impacted Product Photos

UDI MEAL CKN ALFRD 4/18Z
 Unit **UPC:** 00-6-98997-80766-7

MFG/Lot Code	BEST IF USED BY
5000422220	AUG 09 2025
5000426220	SEPT 18 2025



***'BEST IF USED BY' date in photo only represents one impacted lot code. Impacted 'BEST IF USED BY' dates are listed in the table above.**

***Please note:** The lot code may contain additional digits which are internal Conagra ID numbers. Continue to use the lot code provided to identify impacted product.

Nutrition Facts
 about 2 servings per container
 Serving size 1 1/4 cups frozen, 1 cup thawed (241g)

	Per serving	Per container
Calories	390	830
Total Fat	18g 23%	39g 50%
Saturated Fat	11g 55%	22g 110%
Trans Fat	0.5g	1g
Cholesterol	75mg 25%	160mg 53%
Sodium	690mg 30%	1470mg 64%
Total Carb.	38g 13%	77g 28%
	3g 11%	6g 21%

Udi's Chicken Alfredo Meal 4/18oz Impacted Case Photos

UDI MEAL CKN ALFRD 4/18Z
Case UPC: 10-6-98997-80971-2

MFG/Lot Code	BEST IF USED BY
5000422220	AUG 09 2025
5000426220	SEPT 18 2025



'BEST IF USED BY' date in photo is for example purpose only. Impacted 'BEST IF USED BY' dates are listed in the table.

***Please note:** The lot code may contain additional digits which are internal Conagra ID numbers. Continue to use the lot code provided to identify impacted product.